

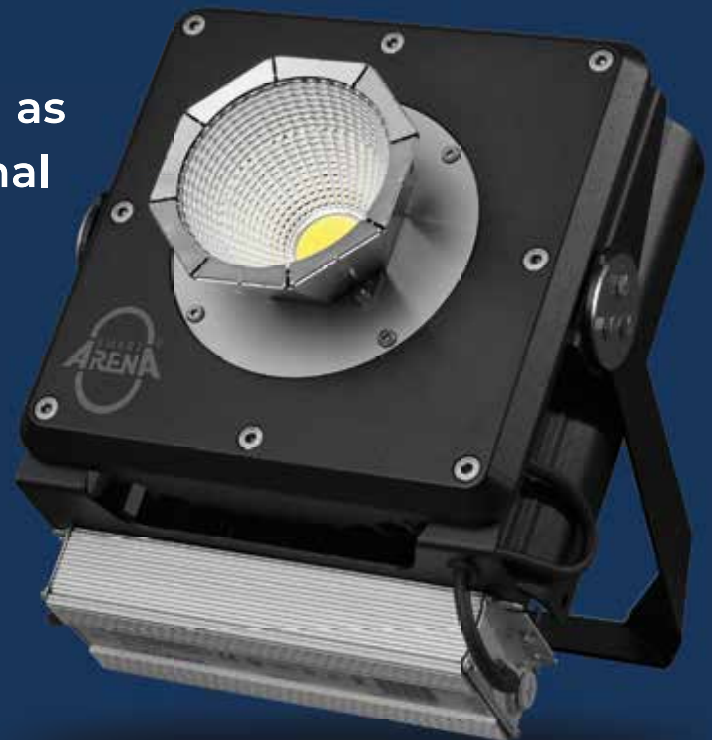


Smart LED

Lighting solutions for sports facilities and multifunctional venues!

cost efficient, sustainable, blend-free, glare-free

SmartArena offers an innovative COB LED lighting solution with maximum smoothness and minimum stray light immission for sports facilities, stadiums, arenas as well as exhibition halls and multifunctional venues!





Why SmartArena?

The company based in Austria offers innovative LED lighting solutions, that meet the specific requirements for light quality, heat management and a long lifespan.

The advantages



modern COB LED technology



colour rendering up to CRI 97



low power consumption



completely flicker-free (HD, UHD, 4K, 8K)



extremely compact build



exchangeable reflectors



unmatched for smooth light distribution



anti-glare accessories guarantee minimum light immission



minimum stray light

Flexibility

All Smart Arena LED types can easily be integrated in the existing infrastructure of sports facilities, exhibition halls and industrial facilities. In addition, they guarantee a lighting quality that fulfils all international standards for every kind of television sports broadcast.

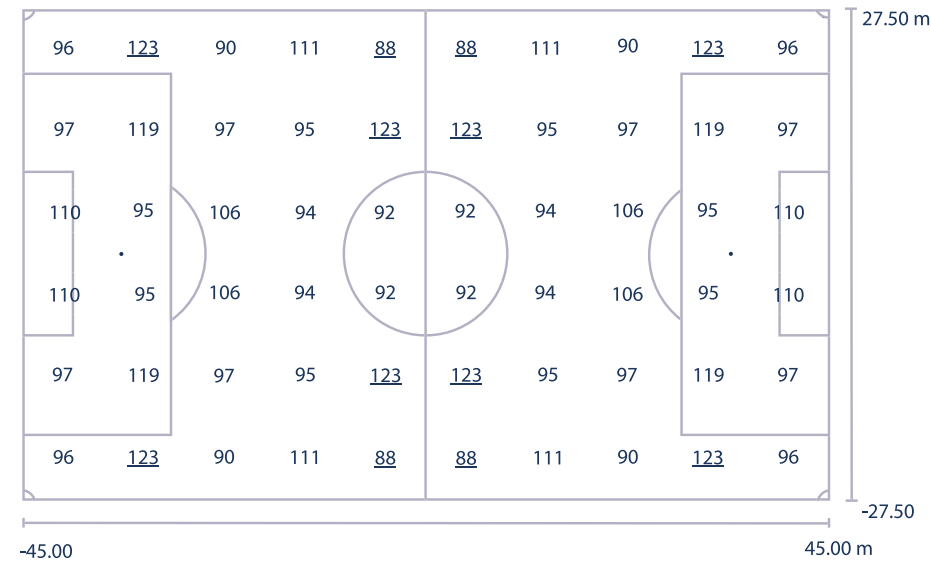
SmartArena fixtures are manufactured in Austria according to the latest production standards and come with a 5-year full warranty.

Fields of application

- sports facilities and stadiums, indoor and outdoor
- multifunctional halls
- sports halls and arenas
- industrial facilities
- congress - and exhibition halls

Calculation examples

Training facilities with a minimum requirement of 100 lux



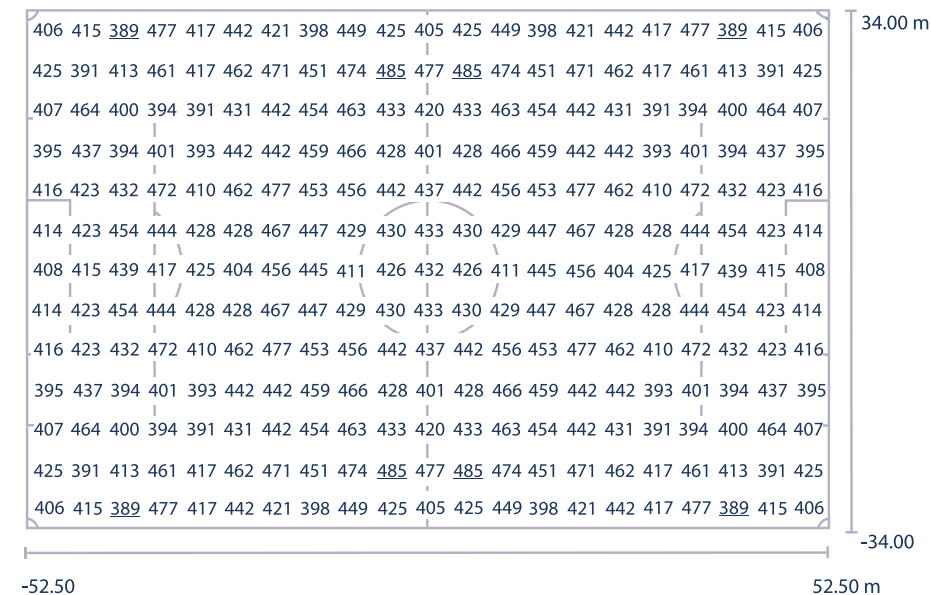
Value in lux, scale: 1 : 644

Grid: 10 x 6 points

E_m [lx]	E_{min} [lx]	E_{max} [lx]	g_1	g_2
102	88	123	0.86	0.71

SMART ARENA Tera 2.0	BASIC 20 LP
power input	6 kW

Competition ground with the highest lighting quality, 400 lux



Value in lux, scale: 1 : 751

Grid: 21 x 13 points

E_m [lx]	E_{min} [lx]	E_{max} [lx]	g_1	g_2
433	389	485	0.90	0.80

SMART ARENA Tera 2.0	ADVANCED 140 LP
power input	42 kW

Associations and communities are concerning themselves with flood lighting more and more. Reasons for this are new installations due to outdated, maintenance-intensive flood lighting systems as well as possible subsidy measures and energy saving through future-oriented technology.

We are happy to prepare an individual lighting calculation for you, based on your specifications. Implementation is possible in sports facilities of every size, from a small training ground to an arena for international competition sports like football, tennis, riding, track and field and many more.

SPECIFICATIONS

	BASIC	ADVANCED	HIGH-END
LUMINOUS FLUX	maximal 45.000 Lumen		
POWER CONSUMPTION RATED VOLTAGE	300 W AC 230 V/50 Hz	350 W AC 230 V/50 Hz	400 W AC 230 V/50 Hz
LIGHT DISPERSION exchangeable lens system	7 rotationally symmetrical light distributors between 10° and 90° HWW and 26 asymmetrical light distributors with up to 7.5° CUT-OFF are provided		
COLOUR TEMPERATURE	5700 K – others on request		
POWER FACTOR	0,98		
IP PROTECTION CLASS	IP67		
MEASUREMENTS (H x L x D)	260 x 260 x 165 mm (without yoke and lens)		
WEIGHT (kg)	approx., 7 – 10 kg, depending on the configuration		
PRESERVATION OF LUMINOUS FLUX	23,000 h L90, min. 80,000 hL (= (Ta = 15°C)		
FLICKER	100 % flicker-free in every dimmer-state		
CAMERA SUITABILITY	HD UHD/4K SSM (super slow motion)		
TEMP-SAVE (protection against overheating)	✓	✓	✓
ACTIVE THERMAL MANAGEMENT	✗	✓	✓
EPA	0,085 m ²	0,085 m ²	0,098 m ²
CRI	Ra > 80	Ra > 80	Ra 97
TLCI - Television Lighting Consistency Index	70	70	95
DIMMING	✗	SWITCH DIMMING programmable	DMX/RDM DIMMING
COMPLIANCE TEST	DIN 18032 - Part 3/2018 for testing ball impact safety		

Preworks GmbH
Technologiepark 4/1
8510 Stainz / Austria

☎ +43 3463 82317
✉ office@preworks.at
🌐 www.preworks.at

PRE Works
...SOWAS VON LICHT!